

SEASIDE LIVING

sunstone

AL REEM ISLAND

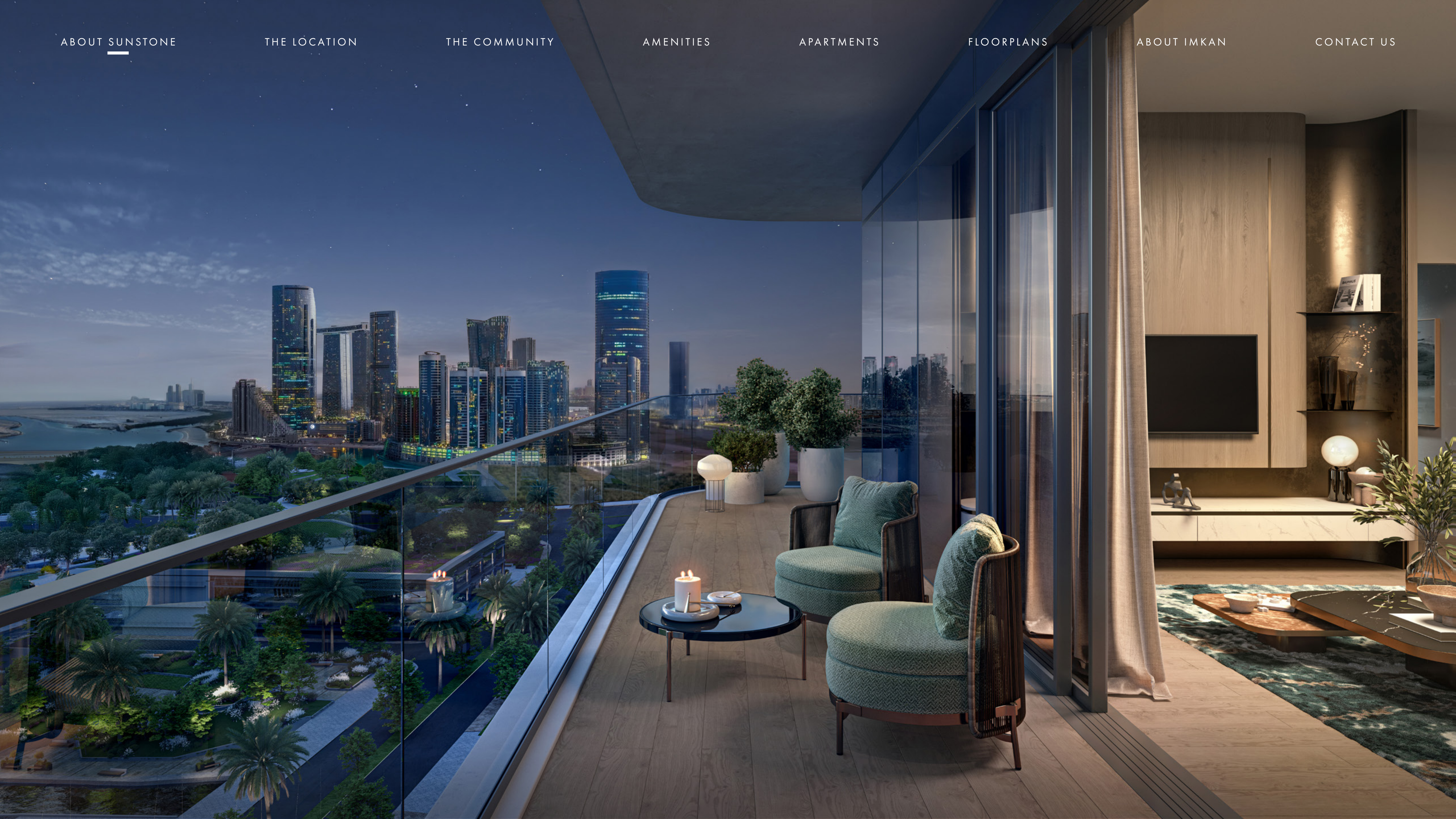
SEASIDE LIVING,
CRAFTED FOR THE TASTEMAKER

A HARMONY OF SAND AND SEA

Inspired by the crystalline beaches, Sunstone by IMKAN is a celebration of a waterfront lifestyle where golden sands meet the azure waves of the **Arabian Gulf** on the edge of **Makers District**.

Sunstone is a manifestation of our commitment to the overall fabric of **Abu Dhabi** - an elegant balance between enhancing the cityscape and standing out as a canvas for sophistication and style on either side of the horizon.

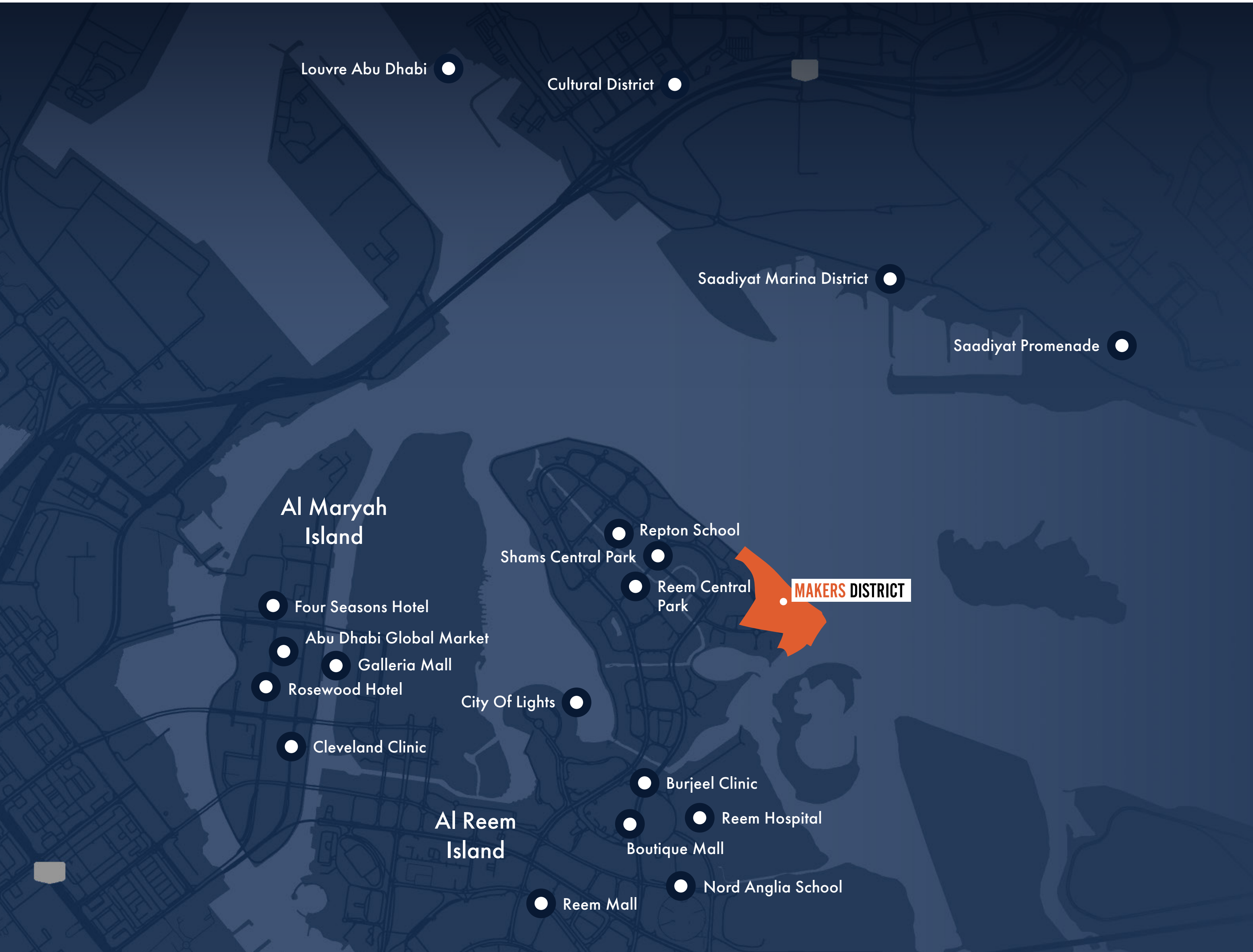




THE LOCATION



MINUTES TO
WHAT MATTERS



YOUR SEASIDE ADDRESS AT THE HEART OF IT ALL

20 Minutes
to Downtown Abu Dhabi

20 Minutes
to Guggenheim Museum

20 Minutes
to Louvre Abu Dhabi

30 Minutes
to Abu Dhabi Airport

50 Minutes
to Al Maktoum International Airport

20 Minutes
to Zayed Museum



IMKAN

THE COMMUNITY



INVITE IN
THE EXTRAORDINARY



MAKERS DISTRICT

Makers District is a vibrant mixed-use **waterfront community** on Al Reem Island, Abu Dhabi, blending modern residential towers, premium single-floor and duplex townhouses, and dynamic retail and dining spaces. Designed with cost-effective, elegant architecture, the development maximises ocean and city views while fostering a creative, energetic atmosphere. Its residential offerings include innovative layouts such as live/work units and loft-style apartments, alongside exclusive townhouses with private entrances and direct access to the lively waterfront promenade. A curated mix of boutique retail, lifestyle outlets, and F&B venues activates the public realm, creating a thriving **social hub** for residents and visitors.



CORNICHE AL REEM

The Pulsing Heart of Makers District.

Corniche Al Reem is more than just a pathway. It is the **vibrant soul of Makers District**, where residents and visitors come together to connect, create, and belong. Stretching 1 kilometer along the **breathtaking waterfront**, it blends innovation, elegance, and natural splendour, linking urban vibrancy with serene beauty. As the city's first climate-controlled promenade, it redefines outdoor living, offering year-round comfort whether strolling under the warmth of the sun or the gentle glow of twilight. Thoughtfully designed to encourage meaningful interactions with both the community and the space, Corniche Al Reem invites you to immerse yourself in its **vibrant energy**.









AN ELEGANT TAPESTRY OF EXPERIENCES

Corniche Al Reem weaves together a rich mosaic of moments, each crafted to elevate your everyday.



Over **100 outlets**, from chic boutiques and gourmet restaurants to artisanal cafés.



Serene, lush **green spaces** perfect for reflection, relaxation, and quiet escape.



Eclectic art installations and **open-air galleries** that spark creativity at every turn.



Scenic **cycling** and **walking paths** that invite you to embrace active, **outdoor living**.

AMENITIES



CURATED FOR
A BALANCED LIFESTYLE

WHERE EXQUISITE FORM MEETS ELEVATED COMFORT

Indulge in **sumptuous** spaces for relaxation, recreation and social interaction, with every inch purposefully designed to enrich a balanced and fulfilling lifestyle.



Outdoor spaces



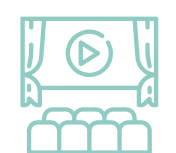
Gym



Promenade



Multipurpose room



Cinema



Lounge and Meeting Rooms



YOUR WINDOW TO BREATHTAKING SKYLINES

Wake up to **incredible vistas** with either expansive views of the tranquil **sea** and **Saadiyat Islands**, or the vibrant Makers District.



DIRECT ACCESS TO MAKERS BEACH

Immerse yourself in the serene beauty of the **coastline**, just steps away from your home, and indulge in daily **beachfront strolls** or invigorating morning swims.



LARGE AMENITY AREAS

Experience **luxury living** with an array of generous amenity spaces designed for relaxation and recreation. Enjoy the expansive **pool deck**, work out in the **state-of-the-art gym**, unwind in the private **cinema space**, and take leisurely walks in the beautifully **landscaped gardens**.



STATE-OF-THE-ART GYM

A **luxuriously curated gym** overflows with state-of-the-art equipment, designed to enhance every stretch, movement and workout. Inspiring, lively and modern, it empowers you to focus your mind, invigorate your body and amplify your lifestyle inside and out.





SPACIOUS MULTIPURPOSE ROOM

Explore the versatility of an expansive space, designed to meet your every need. With transformative flexibility to suit all occasions, the **multipurpose room** provides ultimate convenience for business or pleasure.

HIGH-TECH ENTERTAINMENT HUB

Boasting the very latest in audiovisual technology, this **entertainment space** is every cinephile's dream, offering an unparalleled **cinematic** experience in the comfort of your own residence.



APARTMENTS



INCREDIBLE VIEWS
AT YOUR DOORSTEP

THE GLIMMER OF THE SEA

With the needs of its residents in mind, every element is meticulously chosen to honour the majesty of Sunstone's **glorious seaside** setting. So every resident can have the home of their dreams.



YOUR COVE ON THE COAST

Stunning **1, 2, 3 and 4-bedroom** units face the uninterrupted views of the **sea** or the **unique city skyline**. Pervaded by a sophisticated ambience, spacious apartments feature thoughtfully designed interiors embellished with alluring textures and architectural elements that complement the **exquisite amenities**.





إمكان
IMKAN



AN ODE TO THE HORIZON

Each apartment boasts a **sophisticated** and **timeless interior**, with natural tones and textures providing a warm and inviting atmosphere and reflecting the surroundings to create a **serene living environment**.

- . Warm touches of wood
- . Delicate silk
- . Light palette of timber
- . Reconstituted stone
- . Kitchens with built-in appliances
- . Spacious balconies with panoramic views

1-BEDROOM APARTMENT



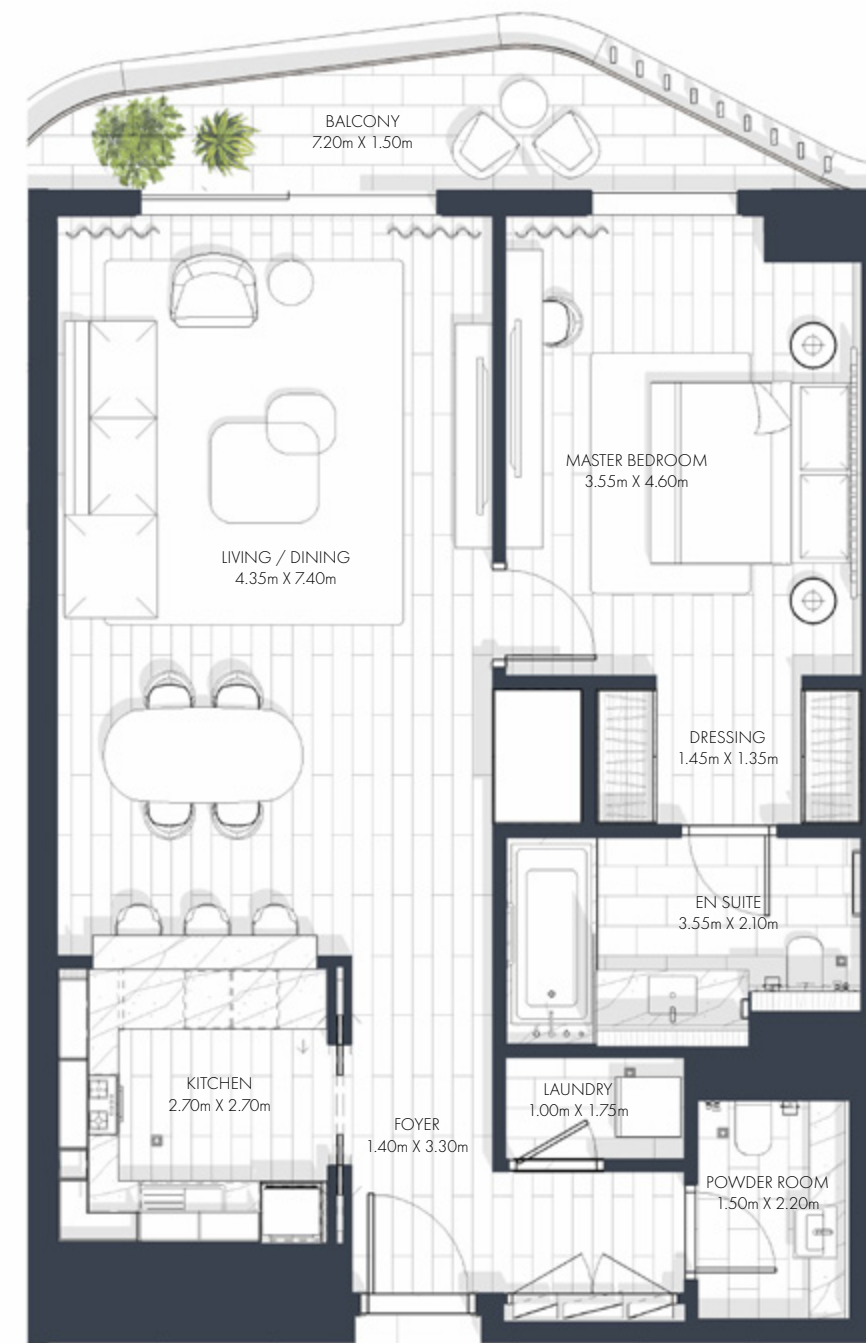




FLOORPLAN

1-Bedroom

Type 1



Plot Area	SQM	SQFT
Suite area	88 m ²	947 ft ²
Balcony area	13 m ²	140 ft ²
Total Built-Up Area	101 m²	1,087 ft²

1-Bedroom

Type 2



Plot Area	SQM	SQFT
Suite area	85 m ²	915 ft ²
Balcony area	14 m ²	151 ft ²
Total Built-Up Area	99 m²	1,066 ft²

All images, renderings, floorplans, features, specifications, and details included in this brochure are for illustrative purposes only and are subject to change without prior notice. The representations herein are based on preliminary conceptual and schematic designs and are not to scale. Actual dimensions, areas, finishes, fittings, materials, specifications, configurations, and landscaping may vary upon final construction and detailed design development. Residential units are sold as unfurnished unless otherwise explicitly stated in the Sale and Purchase Agreement (SPA). Any furnishings, pools, landscaping elements, or outbuildings (including but not limited to majlis, driver's rooms, or summer houses) shown are indicative and not included in the sale unless specified. Masterplans, development layouts, road alignments, and access routes illustrated are indicative only and may be revised as required to comply with regulatory approvals, permit conditions, technical requirements, or at the sole discretion of IMKAN. No representation or warranty is made or implied as to the final position, scale, or proximity of any elements depicted. The SPA shall take precedence and will contain the final and binding terms of sale. IMKAN reserves the absolute right to modify, amend, or withdraw any aspect of the development at any time without incurring any liability.

FLOORPLAN

1-Bedroom

Type 3



Plot Area	SQM	SQFT
Suite area	91 m ²	980 ft ²
Balcony area	15 m ²	161 ft ²
Total Built-Up Area	106 m²	1,141 ft²

2-BEDROOM APARTMENT







FLOORPLAN

2-Bedroom

Type 1



Plot Area	SQM	SQFT
Suite area	128 m ²	1,378 ft ²
Balcony area	23 m ²	248 ft ²
Total Built-Up Area	151 m²	1,625 ft²

2-Bedroom + 1

Type 2



Plot Area	SQM	SQFT
Suite area	144 m ²	1,550 ft ²
Balcony area	40 m ²	431 ft ²
Total Built-Up Area	184 m²	1,981 ft²

All images, renderings, floorplans, features, specifications, and details included in this brochure are for illustrative purposes only and are subject to change without prior notice. The representations herein are based on preliminary conceptual and schematic designs and are not to scale. Actual dimensions, areas, finishes, fittings, materials, specifications, configurations, and landscaping may vary upon final construction and detailed design development. Residential units are sold as unfurnished unless otherwise explicitly stated in the Sale and Purchase Agreement (SPA). Any furnishings, pools, landscaping elements, or outbuildings (including but not limited to majlis, driver's rooms, or summer houses) shown are indicative and not included in the sale unless specified. Masterplans, development layouts, road alignments, and access routes illustrated are indicative only and may be revised as required to comply with regulatory approvals, permit conditions, technical requirements, or at the sole discretion of IMKAN. No representation or warranty is made or implied as to the final position, scale, or proximity of any elements depicted. The SPA shall take precedence and will contain the final and binding terms of sale. IMKAN reserves the absolute right to modify, amend, or withdraw any aspect of the development at any time without incurring any liability.

2-Bedroom + 1

Type 3



Plot Area	SQM	SQFT
Suite area	132 m ²	1,421 ft ²
Balcony area	22 m ²	237 ft ²
Total Built-Up Area	154 m²	1,658 ft²

2-Bedroom

Type 4



Plot Area	SQM	SQFT
Suite area	133 m ²	1,432 ft ²
Balcony area	11 m ²	118 ft ²
Total Built-Up Area	144 m²	1,550 ft²

2-Bedroom + 1

Type 5



Plot Area	SQM	SQFT
Suite area	154 m ²	1,658 ft ²
Balcony area	33 m ²	355 ft ²
Total Built-Up Area	187 m²	2,013 ft²

2 -Bedroom

Type 6



Plot Area	SQM	SQFT
Suite area	126 m ²	1,356 ft ²
Balcony area	17 m ²	183 ft ²
Total Built-Up Area	143 m²	1,539 ft²

All images, renderings, floorplans, features, specifications, and details included in this brochure are for illustrative purposes only and are subject to change without prior notice. The representations herein are based on preliminary conceptual and schematic designs and are not to scale. Actual dimensions, areas, finishes, fittings, materials, specifications, configurations, and landscaping may vary upon final construction and detailed design development. Residential units are sold as unfurnished unless otherwise explicitly stated in the Sale and Purchase Agreement (SPA). Any furnishings, pools, landscaping elements, or outbuildings (including but not limited to majlis, driver's rooms, or summer houses) shown are indicative and not included in the sale unless specified. Masterplans, development layouts, road alignments, and access routes illustrated are indicative only and may be revised as required to comply with regulatory approvals, permit conditions, technical requirements, or at the sole discretion of IMKAN. No representation or warranty is made or implied as to the final position, scale, or proximity of any elements depicted. The SPA shall take precedence and will contain the final and binding terms of sale. IMKAN reserves the absolute right to modify, amend, or withdraw any aspect of the development at any time without incurring any liability.

3-BEDROOM APARTMENT







FLOORPLAN

3-Bedroom + 1

Type 1



Plot Area	SQM	SQFT
Suite area	194 m ²	2,088 ft ²
Balcony area	71 m ²	764 ft ²
Total Built-Up Area	265 m²	2,852 ft²

3-Bedroom + 1

Type 2



Plot Area	SQM	SQFT
Suite area	199 m ²	2,142 ft ²
Balcony area	31 m ²	334 ft ²
Total Built-Up Area	230 m²	2,476 ft²

All images, renderings, floorplans, features, specifications, and details included in this brochure are for illustrative purposes only and are subject to change without prior notice. The representations herein are based on preliminary conceptual and schematic designs and are not to scale. Actual dimensions, areas, finishes, fittings, materials, specifications, configurations, and landscaping may vary upon final construction and detailed design development. Residential units are sold as unfurnished unless otherwise explicitly stated in the Sale and Purchase Agreement (SPA). Any furnishings, pools, landscaping elements, or outbuildings (including but not limited to majlis, driver's rooms, or summer houses) shown are indicative and not included in the sale unless specified. Masterplans, development layouts, road alignments, and access routes illustrated are indicative only and may be revised as required to comply with regulatory approvals, permit conditions, technical requirements, or at the sole discretion of IMKAN. No representation or warranty is made or implied as to the final position, scale, or proximity of any elements depicted. The SPA shall take precedence and will contain the final and binding terms of sale. IMKAN reserves the absolute right to modify, amend, or withdraw any aspect of the development at any time without incurring any liability.

3- Bedroom Sky suite + 1

Type 3A



Plot Area	SQM	SQFT
Suite area	225 m ²	2,422 ft ²
Balcony area	260 m ²	2,799 ft ²
Total Built-Up Area	485 m²	5,220 ft²

3- Bedroom Sky suite + 1

Type 3B

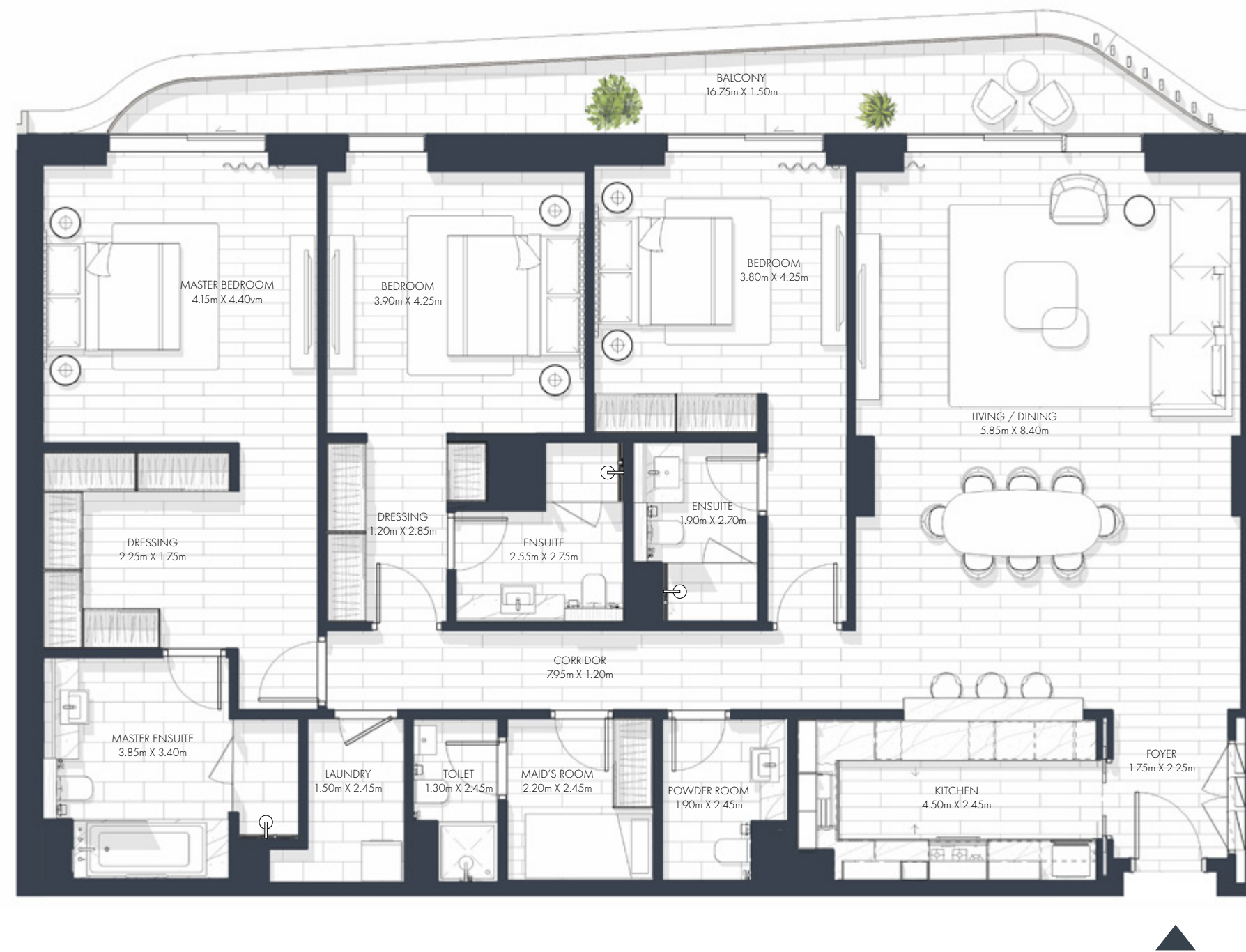


Plot Area	SQM	SQFT
Suite area	225 m ²	2,422 ft ²
Balcony area	162 m ²	1,744 ft ²
Total Built-Up Area	387 m²	4,166 ft²

All images, renderings, floorplans, features, specifications, and details included in this brochure are for illustrative purposes only and are subject to change without prior notice. The representations herein are based on preliminary conceptual and schematic designs and are not to scale. Actual dimensions, areas, finishes, fittings, materials, specifications, configurations, and landscaping may vary upon final construction and detailed design development. Residential units are sold as unfurnished unless otherwise explicitly stated in the Sale and Purchase Agreement (SPA). Any furnishings, pools, landscaping elements, or outbuildings (including but not limited to majlis, driver's rooms, or summer houses) shown are indicative and not included in the sale unless specified. Masterplans, development layouts, road alignments, and access routes illustrated are indicative only and may be revised as required to comply with regulatory approvals, permit conditions, technical requirements, or at the sole discretion of IMKAN. No representation or warranty is made or implied as to the final position, scale, or proximity of any elements depicted. The SPA shall take precedence and will contain the final and binding terms of sale. IMKAN reserves the absolute right to modify, amend, or withdraw any aspect of the development at any time without incurring any liability.

3-Bedroom + 1

Type 4



Plot Area	SQM	SQFT
Suite area	195 m ²	2,099 ft ²
Balcony area	24 m ²	258 ft ²
Total Built-Up Area	219 m²	2,357 ft²

3-Bedroom + 1

Duplex



Plot Area	SQM	SQFT
Suite area	212 m ²	2,282 ft ²
Balcony area	13 m ²	140 ft ²
Total Built-Up Area	225 m²	2,422 ft²

All images, renderings, floorplans, features, specifications, and details included in this brochure are for illustrative purposes only and are subject to change without prior notice. The representations herein are based on preliminary conceptual and schematic designs and are not to scale. Actual dimensions, areas, finishes, fittings, materials, specifications, configurations, and landscaping may vary upon final construction and detailed design development. Residential units are sold as unfurnished unless otherwise explicitly stated in the Sale and Purchase Agreement (SPA). Any furnishings, pools, landscaping elements, or outbuildings (including but not limited to majlis, driver's rooms, or summer houses) shown are indicative and not included in the sale unless specified. Masterplans, development layouts, road alignments, and access routes illustrated are indicative only and may be revised as required to comply with regulatory approvals, permit conditions, technical requirements, or at the sole discretion of IMKAN. No representation or warranty is made or implied as to the final position, scale, or proximity of any elements depicted. The SPA shall take precedence and will contain the final and binding terms of sale. IMKAN reserves the absolute right to modify, amend, or withdraw any aspect of the development at any time without incurring any liability.



4-BEDROOM
APARTMENTS

4-BEDROOM APARTMENT







FLOORPLAN

4-Bedroom + 1

Type 1



Plot Area	SQM	SQFT
Suite area	291 m ²	3,132 ft ²
Balcony area	61 m ²	657 ft ²
Total Built-Up Area	352 m²	3,789 ft²

4-Bedroom + 1

Duplex



Plot Area	SQM	SQFT
Suite area	229 m ²	2,465 ft ²
Balcony area	21 m ²	226 ft ²
Total Built-Up Area	250 m²	2,691 ft²

All images, renderings, floorplans, features, specifications, and details included in this brochure are for illustrative purposes only and are subject to change without prior notice. The representations herein are based on preliminary conceptual and schematic designs and are not to scale. Actual dimensions, areas, finishes, fittings, materials, specifications, configurations, and landscaping may vary upon final construction and detailed design development. Residential units are sold as unfurnished unless otherwise explicitly stated in the Sale and Purchase Agreement (SPA). Any furnishings, pools, landscaping elements, or outbuildings (including but not limited to majlis, driver's rooms, or summer houses) shown are indicative and not included in the sale unless specified. Masterplans, development layouts, road alignments, and access routes illustrated are indicative only and may be revised as required to comply with regulatory approvals, permit conditions, technical requirements, or at the sole discretion of IMKAN. No representation or warranty is made or implied as to the final position, scale, or proximity of any elements depicted. The SPA shall take precedence and will contain the final and binding terms of sale. IMKAN reserves the absolute right to modify, amend, or withdraw any aspect of the development at any time without incurring any liability.



INTERIOR MATERIALS

1. Porcelain Floor Tile
2. Wall & Ceiling Paint
3. Textured Wall Paint
4. Laminate Finish Joinery
5. Reconstituted Stone Pantry Counter Top
6. Metal Finish Throughout
7. Lacquer Finish Black Colour Casework
8. Lacquer Finish Taupe Colour Casework
9. Cinema Carpet
10. Acoustic Wall Panel Cinema

ABOUT THE DEVELOPER



SOULFUL PLACES
ENRICHED LIVES





إمكان
IMKAN

إمكان
I M K A N

IMKAN

Global Real Estate Developer

IMKAN is a real estate development and investment company with a focus on creating unique and vibrant urban projects. The company is known for its innovative approach to placemaking, which involves designing spaces that foster a sense of community, well-being, and sustainability. IMKAN is committed to developing soulful places that enrich people's lives by integrating research-based approaches and ensuring a strong emphasis on human well-being.

IMKAN is developing a range of projects, including AllJurf and SHA Emirates, which exemplify its dedication to blending natural surroundings with modern living, providing residents with a harmonious and environmentally conscious lifestyle. The company's portfolio includes a diverse range of developments, from residential communities to mixed-use destinations, all of which are characterised by their commitment to creating holistic, human-centric environments.

GET IN TOUCH



CALL
800 IMKAN (46526)



EMAIL
INFO@IMKAN.AE



VISIT OUR WEBSITE
WWW.IMKAN.AE



Disclaimer:
All renderings, floorplans, features and specifications are conceptual only and subject to change. All above drawings are not to scale. The architectural details, dimensions and area in the plan are based on draft schematic designs. The contents of this brochure contain conceptual and schematic design information only, all dimensions are approximate and may vary with actual construction and/or more detailed design. All images used are for illustrative purposes only and do not represent the actual size, features, specifications, fittings, and furnishings. Residential units are sold as unfurnished without furnishings and decoration. A furniture package may be available - please contact IMKAN or your agent for more details. Landscaping, pools and out-buildings (including but not limited to summer-house(s), majlis, drivers room(s) unless indicated otherwise are not included within the sale of the unit. They have been provided for illustrative purposes only. The Sale and Purchase Agreement shall include more accurate details of the items included as part of the units sold. Masterplans, illustrations and sections are "work in progress" which may periodically change as circumstances require and according to applicable government regulations and permits. Overall concepts may be used as general reference sources, but specific details are not to be viewed as "set in stone" or binding. IMKAN reserves the right at any time to make revisions and alterations to the units represented in this brochure, at its absolute discretion, and without any liability whatsoever.