

SEASIDE LIVING

sunstone

AL REEM ISLAND

SEASIDE LIVING,
CRAFTED FOR THE TASTEMAKER

1-BEDROOM APARTMENT



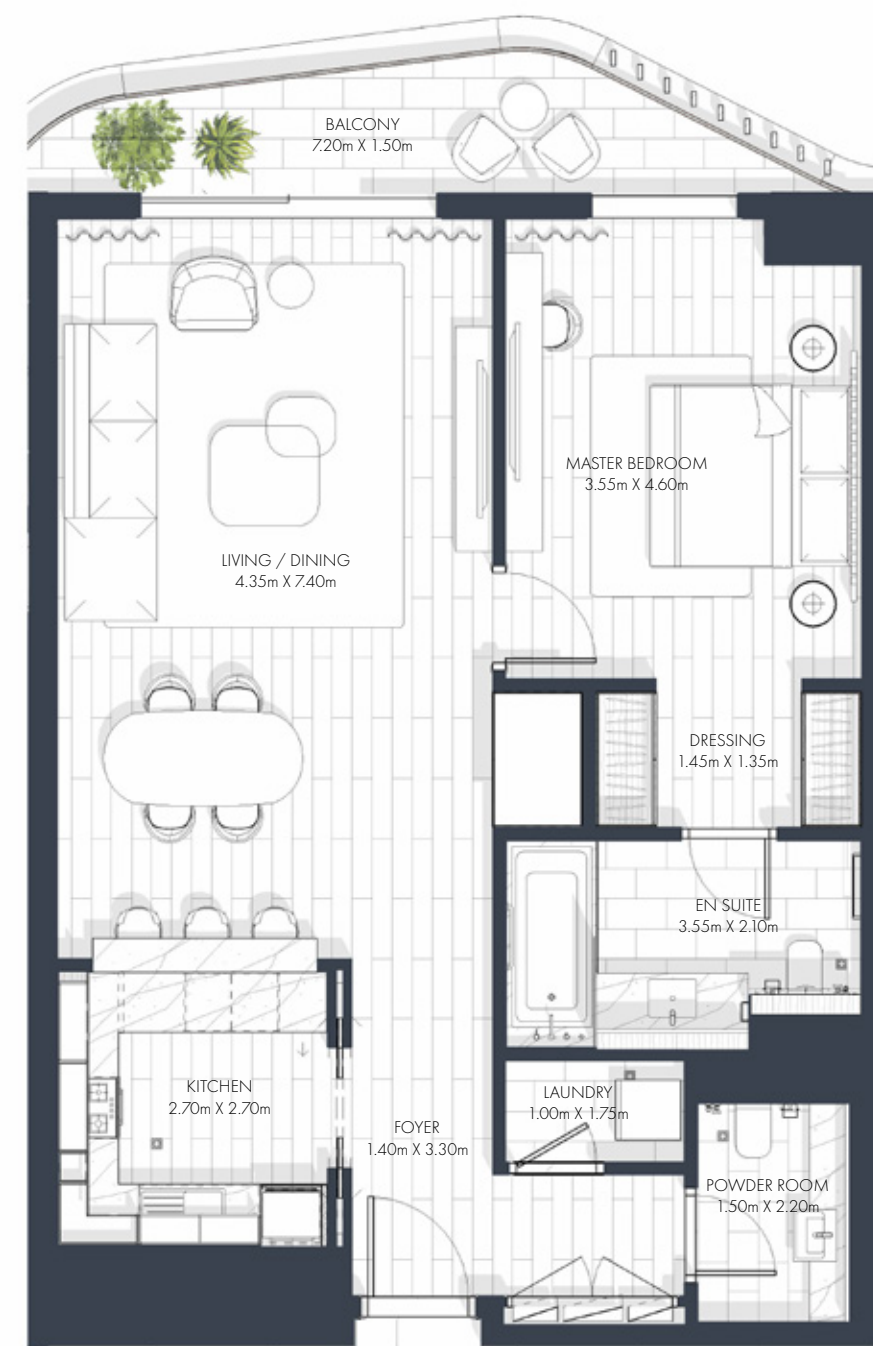




FLOORPLAN

1-Bedroom

Type 1



Plot Area	SQM	SQFT
Suite area	88 m ²	947 ft ²
Balcony area	13 m ²	140 ft ²
Total Built-Up Area	101 m²	1,087 ft²

1-Bedroom

Type 2



Plot Area	SQM	SQFT
Suite area	85 m ²	915 ft ²
Balcony area	14 m ²	151 ft ²
Total Built-Up Area	99 m²	1,066 ft²

All images, renderings, floorplans, features, specifications, and details included in this brochure are for illustrative purposes only and are subject to change without prior notice. The representations herein are based on preliminary conceptual and schematic designs and are not to scale. Actual dimensions, areas, finishes, fittings, materials, specifications, configurations, and landscaping may vary upon final construction and detailed design development. Residential units are sold as unfurnished unless otherwise explicitly stated in the Sale and Purchase Agreement (SPA). Any furnishings, pools, landscaping elements, or outbuildings (including but not limited to majlis, driver's rooms, or summer houses) shown are indicative and not included in the sale unless specified. Masterplans, development layouts, road alignments, and access routes illustrated are indicative only and may be revised as required to comply with regulatory approvals, permit conditions, technical requirements, or at the sole discretion of IMKAN. No representation or warranty is made or implied as to the final position, scale, or proximity of any elements depicted. The SPA shall take precedence and will contain the final and binding terms of sale. IMKAN reserves the absolute right to modify, amend, or withdraw any aspect of the development at any time without incurring any liability.

FLOORPLAN

1-Bedroom

Type 3



Plot Area	SQM	SQFT
Suite area	91 m ²	980 ft ²
Balcony area	15 m ²	161 ft ²
Total Built-Up Area	106 m²	1,141 ft²

All images, renderings, floorplans, features, specifications, and details included in this brochure are for illustrative purposes only and are subject to change without prior notice. The representations herein are based on preliminary conceptual and schematic designs and are not to scale. Actual dimensions, areas, finishes, fittings, materials, specifications, configurations, and landscaping may vary upon final construction and detailed design development. Residential units are sold as unfurnished unless otherwise explicitly stated in the Sale and Purchase Agreement (SPA). Any furnishings, pools, landscaping elements, or outbuildings (including but not limited to majlis, driver's rooms, or summer houses) shown are indicative and not included in the sale unless specified. Masterplans, development layouts, road alignments, and access routes illustrated are indicative only and may be revised as required to comply with regulatory approvals, permit conditions, technical requirements, or at the sole discretion of IMKAN. No representation or warranty is made or implied as to the final position, scale, or proximity of any elements depicted. The SPA shall take precedence and will contain the final and binding terms of sale. IMKAN reserves the absolute right to modify, amend, or withdraw any aspect of the development at any time without incurring any liability.

2-BEDROOM APARTMENT







FLOORPLAN

2-Bedroom

Type 1



Plot Area	SQM	SQFT
Suite area	128 m ²	1,378 ft ²
Balcony area	23 m ²	248 ft ²
Total Built-Up Area	151 m²	1,625 ft²

2-Bedroom + 1

Type 2



Plot Area	SQM	SQFT
Suite area	144 m ²	1,550 ft ²
Balcony area	40 m ²	431 ft ²
Total Built-Up Area	184 m²	1,981 ft²

All images, renderings, floorplans, features, specifications, and details included in this brochure are for illustrative purposes only and are subject to change without prior notice. The representations herein are based on preliminary conceptual and schematic designs and are not to scale. Actual dimensions, areas, finishes, fittings, materials, specifications, configurations, and landscaping may vary upon final construction and detailed design development. Residential units are sold as unfurnished unless otherwise explicitly stated in the Sale and Purchase Agreement (SPA). Any furnishings, pools, landscaping elements, or outbuildings (including but not limited to majlis, driver's rooms, or summer houses) shown are indicative and not included in the sale unless specified. Masterplans, development layouts, road alignments, and access routes illustrated are indicative only and may be revised as required to comply with regulatory approvals, permit conditions, technical requirements, or at the sole discretion of IMKAN. No representation or warranty is made or implied as to the final position, scale, or proximity of any elements depicted. The SPA shall take precedence and will contain the final and binding terms of sale. IMKAN reserves the absolute right to modify, amend, or withdraw any aspect of the development at any time without incurring any liability.

2-Bedroom + 1

Type 3



Plot Area	SQM	SQFT
Suite area	132 m ²	1,421 ft ²
Balcony area	22 m ²	237 ft ²
Total Built-Up Area	154 m²	1,658 ft²

2-Bedroom

Type 4



Plot Area	SQM	SQFT
Suite area	133 m ²	1,432 ft ²
Balcony area	11 m ²	118 ft ²
Total Built-Up Area	144 m²	1,550 ft²

All images, renderings, floorplans, features, specifications, and details included in this brochure are for illustrative purposes only and are subject to change without prior notice. The representations herein are based on preliminary conceptual and schematic designs and are not to scale. Actual dimensions, areas, finishes, fittings, materials, specifications, configurations, and landscaping may vary upon final construction and detailed design development. Residential units are sold as unfurnished unless otherwise explicitly stated in the Sale and Purchase Agreement (SPA). Any furnishings, pools, landscaping elements, or outbuildings (including but not limited to majlis, driver's rooms, or summer houses) shown are indicative and not included in the sale unless specified. Masterplans, development layouts, road alignments, and access routes illustrated are indicative only and may be revised as required to comply with regulatory approvals, permit conditions, technical requirements, or at the sole discretion of IMKAN. No representation or warranty is made or implied as to the final position, scale, or proximity of any elements depicted. The SPA shall take precedence and will contain the final and binding terms of sale. IMKAN reserves the absolute right to modify, amend, or withdraw any aspect of the development at any time without incurring any liability.

2-Bedroom + 1

Type 5



Plot Area	SQM	SQFT
Suite area	154 m ²	1,658 ft ²
Balcony area	33 m ²	355 ft ²
Total Built-Up Area	187 m²	2,013 ft²

2 -Bedroom

Type 6



Plot Area	SQM	SQFT
Suite area	126 m ²	1,356 ft ²
Balcony area	17 m ²	183 ft ²
Total Built-Up Area	143 m²	1,539 ft²

All images, renderings, floorplans, features, specifications, and details included in this brochure are for illustrative purposes only and are subject to change without prior notice. The representations herein are based on preliminary conceptual and schematic designs and are not to scale. Actual dimensions, areas, finishes, fittings, materials, specifications, configurations, and landscaping may vary upon final construction and detailed design development. Residential units are sold as unfurnished unless otherwise explicitly stated in the Sale and Purchase Agreement (SPA). Any furnishings, pools, landscaping elements, or outbuildings (including but not limited to majlis, driver's rooms, or summer houses) shown are indicative and not included in the sale unless specified. Masterplans, development layouts, road alignments, and access routes illustrated are indicative only and may be revised as required to comply with regulatory approvals, permit conditions, technical requirements, or at the sole discretion of IMKAN. No representation or warranty is made or implied as to the final position, scale, or proximity of any elements depicted. The SPA shall take precedence and will contain the final and binding terms of sale. IMKAN reserves the absolute right to modify, amend, or withdraw any aspect of the development at any time without incurring any liability.

3-BEDROOM APARTMENT







FLOORPLAN

3-Bedroom + 1

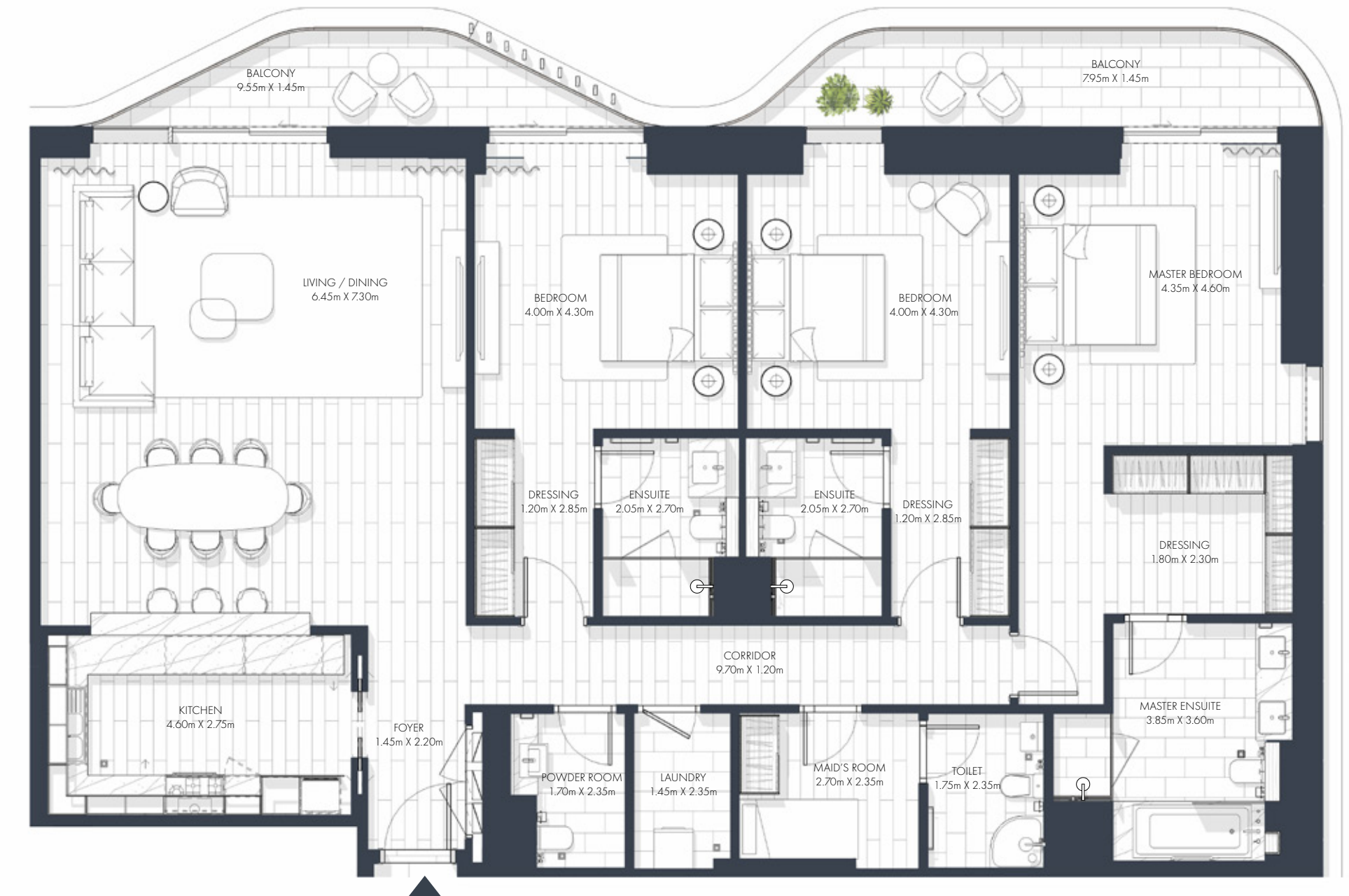
Type 1



Plot Area	SQM	SQFT
Suite area	194 m ²	2,088 ft ²
Balcony area	71 m ²	764 ft ²
Total Built-Up Area	265 m²	2,852 ft²

3-Bedroom + 1

Type 2



Plot Area	SQM	SQFT
Suite area	199 m ²	2,142 ft ²
Balcony area	31 m ²	334 ft ²
Total Built-Up Area	230 m²	2,476 ft²

All images, renderings, floorplans, features, specifications, and details included in this brochure are for illustrative purposes only and are subject to change without prior notice. The representations herein are based on preliminary conceptual and schematic designs and are not to scale. Actual dimensions, areas, finishes, fittings, materials, specifications, configurations, and landscaping may vary upon final construction and detailed design development. Residential units are sold as unfurnished unless otherwise explicitly stated in the Sale and Purchase Agreement (SPA). Any furnishings, pools, landscaping elements, or outbuildings (including but not limited to majlis, driver's rooms, or summer houses) shown are indicative and not included in the sale unless specified. Masterplans, development layouts, road alignments, and access routes illustrated are indicative only and may be revised as required to comply with regulatory approvals, permit conditions, technical requirements, or at the sole discretion of IMKAN. No representation or warranty is made or implied as to the final position, scale, or proximity of any elements depicted. The SPA shall take precedence and will contain the final and binding terms of sale. IMKAN reserves the absolute right to modify, amend, or withdraw any aspect of the development at any time without incurring any liability.

3- Bedroom Sky suite + 1

Type 3A



Plot Area	SQM	SQFT
Suite area	225 m ²	2,422 ft ²
Balcony area	260 m ²	2,799 ft ²
Total Built-Up Area	485 m²	5,220 ft²

3- Bedroom Sky suite + 1

Type 3B

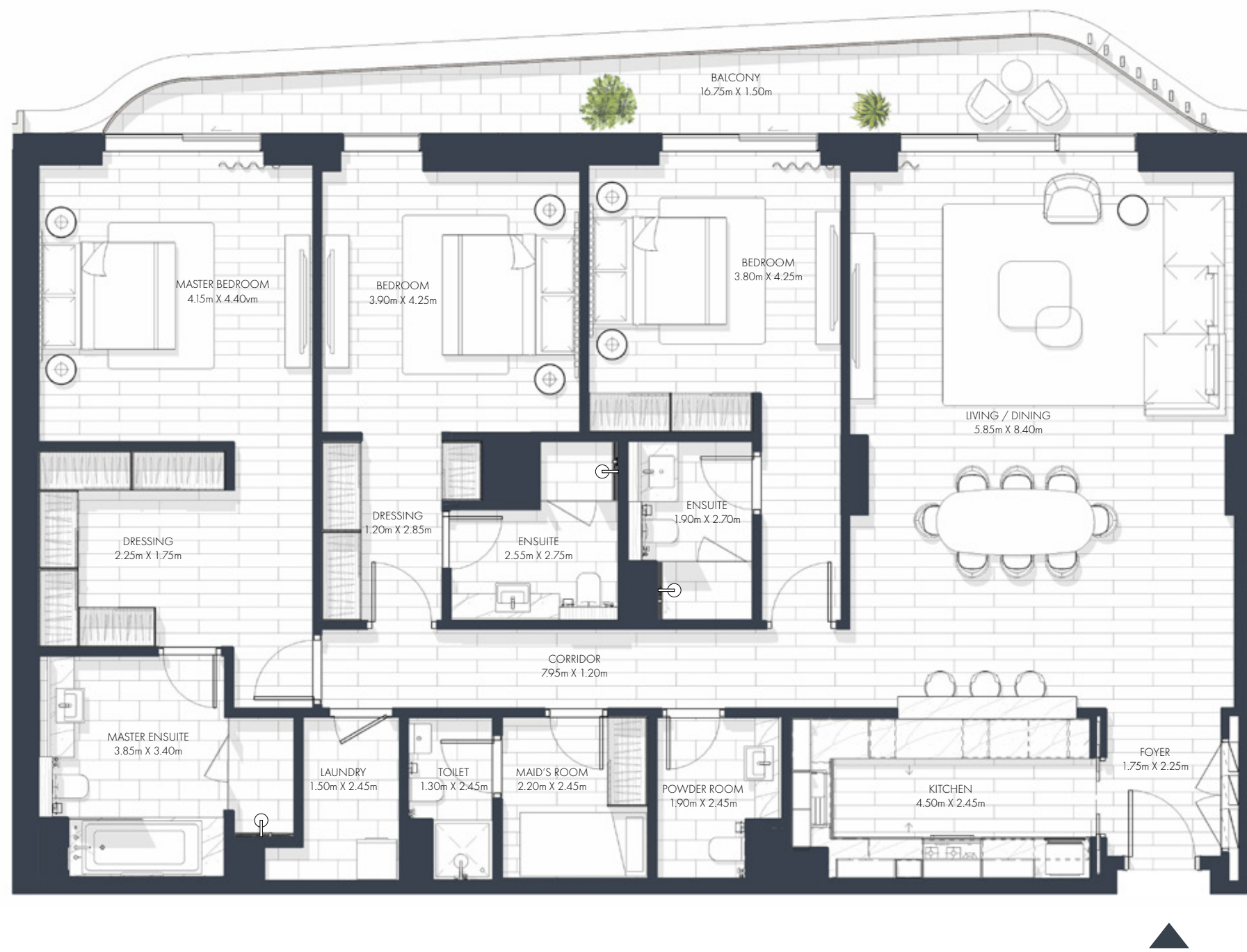


Plot Area	SQM	SQFT
Suite area	225 m ²	2,422 ft ²
Balcony area	162 m ²	1,744 ft ²
Total Built-Up Area	387 m²	4,166 ft²

All images, renderings, floorplans, features, specifications, and details included in this brochure are for illustrative purposes only and are subject to change without prior notice. The representations herein are based on preliminary conceptual and schematic designs and are not to scale. Actual dimensions, areas, finishes, fittings, materials, specifications, configurations, and landscaping may vary upon final construction and detailed design development. Residential units are sold as unfurnished unless otherwise explicitly stated in the Sale and Purchase Agreement (SPA). Any furnishings, pools, landscaping elements, or outbuildings (including but not limited to majlis, driver's rooms, or summer houses) shown are indicative and not included in the sale unless specified. Masterplans, development layouts, road alignments, and access routes illustrated are indicative only and may be revised as required to comply with regulatory approvals, permit conditions, technical requirements, or at the sole discretion of IMKAN. No representation or warranty is made or implied as to the final position, scale, or proximity of any elements depicted. The SPA shall take precedence and will contain the final and binding terms of sale. IMKAN reserves the absolute right to modify, amend, or withdraw any aspect of the development at any time without incurring any liability.

3-Bedroom + 1

Type 4



Plot Area	SQM	SQFT
Suite area	195 m ²	2,099 ft ²
Balcony area	24 m ²	258 ft ²
Total Built-Up Area	219 m²	2,357 ft²

3-Bedroom + 1

Duplex



Plot Area	SQM	SQFT
Suite area	212 m ²	2,282 ft ²
Balcony area	13 m ²	140 ft ²
Total Built-Up Area	225 m²	2,422 ft²

All images, renderings, floorplans, features, specifications, and details included in this brochure are for illustrative purposes only and are subject to change without prior notice. The representations herein are based on preliminary conceptual and schematic designs and are not to scale. Actual dimensions, areas, finishes, fittings, materials, specifications, configurations, and landscaping may vary upon final construction and detailed design development. Residential units are sold as unfurnished unless otherwise explicitly stated in the Sale and Purchase Agreement (SPA). Any furnishings, pools, landscaping elements, or outbuildings (including but not limited to majlis, driver's rooms, or summer houses) shown are indicative and not included in the sale unless specified. Masterplans, development layouts, road alignments, and access routes illustrated are indicative only and may be revised as required to comply with regulatory approvals, permit conditions, technical requirements, or at the sole discretion of IMKAN. No representation or warranty is made or implied as to the final position, scale, or proximity of any elements depicted. The SPA shall take precedence and will contain the final and binding terms of sale. IMKAN reserves the absolute right to modify, amend, or withdraw any aspect of the development at any time without incurring any liability.



4-BEDROOM
APARTMENTS

4-BEDROOM APARTMENT







FLOORPLAN

4-Bedroom + 1

Type 1



Plot Area	SQM	SQFT
Suite area	291 m ²	3,132 ft ²
Balcony area	61 m ²	657 ft ²
Total Built-Up Area	352 m²	3,789 ft²

4-Bedroom + 1

Duplex



Plot Area	SQM	SQFT
Suite area	229 m ²	2,465 ft ²
Balcony area	21 m ²	226 ft ²
Total Built-Up Area	250 m²	2,691 ft²

All images, renderings, floorplans, features, specifications, and details included in this brochure are for illustrative purposes only and are subject to change without prior notice. The representations herein are based on preliminary conceptual and schematic designs and are not to scale. Actual dimensions, areas, finishes, fittings, materials, specifications, configurations, and landscaping may vary upon final construction and detailed design development. Residential units are sold as unfurnished unless otherwise explicitly stated in the Sale and Purchase Agreement (SPA). Any furnishings, pools, landscaping elements, or outbuildings (including but not limited to majlis, driver's rooms, or summer houses) shown are indicative and not included in the sale unless specified. Masterplans, development layouts, road alignments, and access routes illustrated are indicative only and may be revised as required to comply with regulatory approvals, permit conditions, technical requirements, or at the sole discretion of IMKAN. No representation or warranty is made or implied as to the final position, scale, or proximity of any elements depicted. The SPA shall take precedence and will contain the final and binding terms of sale. IMKAN reserves the absolute right to modify, amend, or withdraw any aspect of the development at any time without incurring any liability.



GET IN TOUCH



CALL
800 IMKAN (46526)



EMAIL
INFO@IMKAN.AE



VISIT OUR WEBSITE
WWW.IMKAN.AE

Disclaimer:

All renderings, floorplans, features and specifications are conceptual only and subject to change. All above drawings are not to scale. The architectural details, dimensions and area in the plan are based on draft schematic designs. The contents of this brochure contain conceptual and schematic design information only, all dimensions are approximate and may vary with actual construction and/or more detailed design. All images used are for illustrative purposes only and do not represent the actual size, features, specifications, fittings, and furnishings. Residential units are sold as unfurnished without furnishings and decoration. A furniture package may be available - please contact IMKAN or your agent for more details. Landscaping, pools and out-buildings (including but not limited to summer-house(s), majlis, drivers room(s) unless indicated otherwise are not included within the sale of the unit. They have been provided for illustrative purposes only. The Sale and Purchase Agreement shall include more accurate details of the items included as part of the units sold. Masterplans, illustrations and sections are "work in progress" which may periodically change as circumstances require and according to applicable government regulations and permits. Overall concepts may be used as general reference sources, but specific details are not to be viewed as "set in stone" or binding. IMKAN reserves the right at any time to make revisions and alterations to the units represented in this brochure, at its absolute discretion, and without any liability whatsoever.